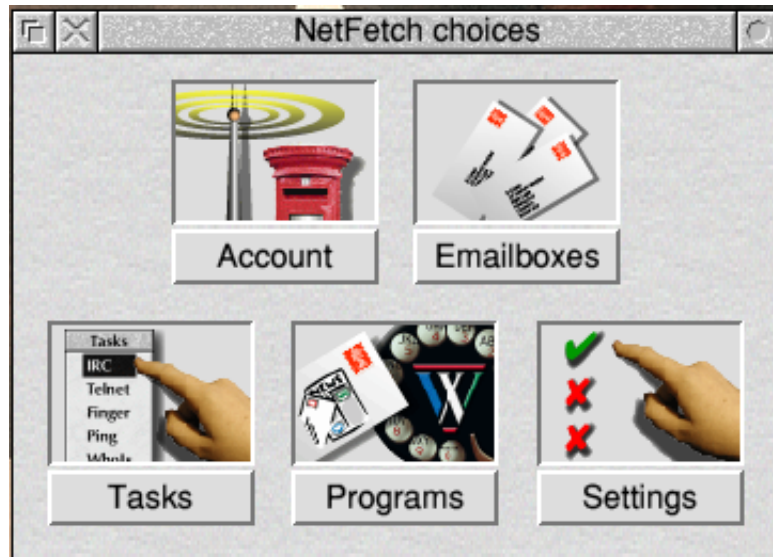


Configuring !NetFetch (v5.53) for Orpheus E-Mail

01. Load !NetFetch to the icon bar
02. Position mouse pointer over !NetFetch and press the menu button
03. Highlight and click on 'Choices'
04. The !NetFetch choices window will appear as below



05. Now click on 'Account'
06. You will now see the following screen

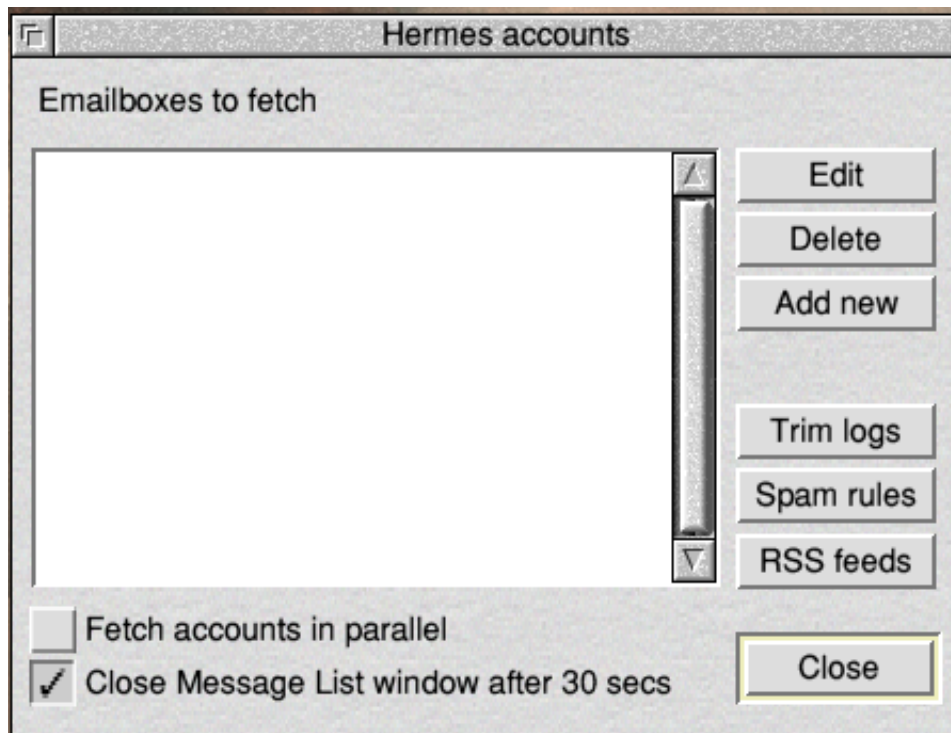


07. Fill in the smtp box with the info provided to you on your Account Details PDF
08. Once you have done that click on the 'Advanced' button to see the next window to fill in (see next page)



A dialog box titled "User/Password" with a standard window icon in the top-left corner. The text inside reads: "Whilst many servers do not need these settings filled in, security is becoming more common". Below this text are two input fields: "User name:" containing "cj01" and "Password:" containing "*****". At the bottom, there are three buttons: "Cancel", "Detailed...", and "OK". The "OK" button is highlighted with a yellow border.

09. Fill in the boxes with the details provided to you
10. Click on 'OK'
11. Now click on the 'Finish button at the bottom of the 'Edit Internet account mail/news window
12. On the first window you opened click on 'Emailboxes'
13. The 'Hermes accounts' window will open and you can click on the 'Add new' button



A dialog box titled "Hermes accounts" with a standard window icon in the top-left corner. The text inside reads: "Emailboxes to fetch". Below this text is a large empty rectangular area with a vertical scrollbar on its right side. To the right of this area are several buttons: "Edit", "Delete", "Add new", "Trim logs", "Spam rules", and "RSS feeds". At the bottom left, there are two checkboxes: "Fetch accounts in parallel" (unchecked) and "Close Message List window after 30 secs" (checked). At the bottom right, there is a "Close" button. The "Close" button is highlighted with a yellow border.

14. In the new window that opens we will fill in the following details

New POP account (Fetch 0001)

Account details

Account name
(user-defined name to aid identification)

Local user (filename)
(usually user to deliver to in email client)

POP3 mail server

Port

User name

Password

Account ID: 0001
Type: POP

Account
 Mail logs
 Security
 Fetching
 Oversize
 Advanced
 Filtering

Cancel
Create

15. Enter a name in the 1st field that means something to you 'David Bloggs' for instance

16. "Local user" should ideally match the user in !Messenger (shown under its iconbar icon) that you want your email to end up in. If in doubt, or you are using !Pluto, just make it the same as your Orpheus username. Since it is a filename, please replace any "." characters with "/".

17. Enter in the mail receive server as provided to you in the 'POP3 mail server' box

18. In the 'Port' box enter 110 as the default number (we will cover other ports in a moment)

19. Now enter in your pop user and password as you did in the smtp server section

20. You could now click on 'Create' and return to the 'Hermes accounts' window, then click on close

21. Next click on the X to close the 'NetFetch Choices' window and !NetFetch is ready to collect mail

If you wish to use secure mail fetching continue with the following instructions

22. Once you have filled in the window above click on the circle next to the option 'Security' on the right

23. The screen at the top of the next page will appear and we can now choose our security option.

New POP account (Fetch 0001)

Security

Authenticated login (APOP)

Secure connection

SSL (usually port 995)

STARTTLS (usually port 110)

Change the port on the Accounts tab if your ISP specifies a different number

Account ID: 0001
Type: POP

Account

Mail logs

Security

Fetching

Oversize

Advanced

Filtering

Cancel

Create

24. The most commonly used option is 'Secure connection' Orpheus does not use APOP
25. Click on the tick box next to 'Secure Connection'
26. Click on the STARTTLS option and it will use port 110 as you set in the previous window
27. If you wish to use SSL then choose/click that option as below
28. Now continue to the next page

New POP account (Fetch 0001)

Security

Authenticated login (APOP)

Secure connection

SSL (usually port 995)

STARTTLS (usually port 110)

Change the port on the Accounts tab if your ISP specifies a different number

Account ID: 0001
Type: POP

Account

Mail logs

Security

Fetching

Oversize

Advanced

Filtering

Cancel

Create

29.If you chose SSL then click on the circle next to Account and you will see the window below

30. Look at the Port box and you will see that it has reflected the choice that you made and changed the number accordingly

31. Now you can click create and save the profile/user as described previously.

New POP account (Fetch 0001)

Account details

Account name
(user-defined name to aid identification)

Local user (filename)
(usually user to deliver to in email client)

POP3 mail server

Port

User name

Password

Account ID: 0001
Type: POP

Account
 Mail logs
 Security
 Fetching
 Oversize
 Advanced
 Filtering